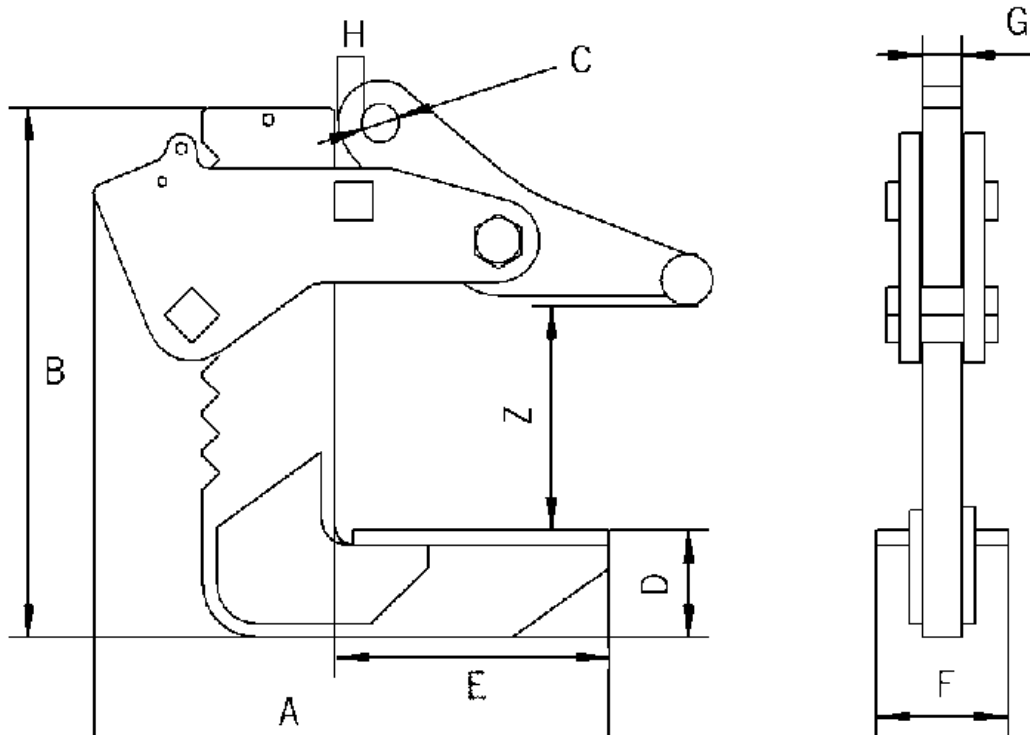


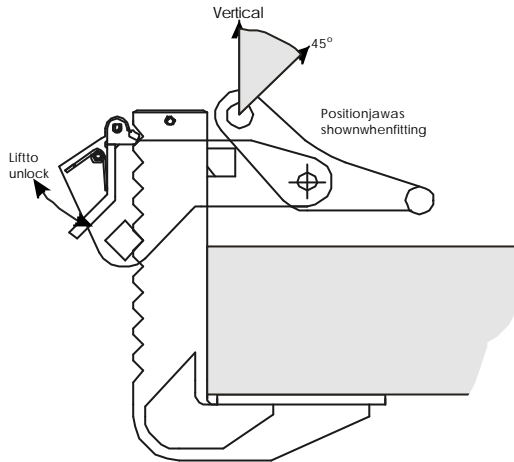
## DESCRIPTION

The ACH Series of plate clamps can be used in pairs with a 2 legs sling at 90° on all types of materials in plate form providing that the plate can withstand the forces imposed on to it. The Adjustable Height Horizontal Plate Clamp is designed to lift and transport thick plate and plate bundles in the horizontal position



MODEL	WLL Tons	Plate mm Z	Weight kg	A	B	C	D	E	F	G	H
ACH0.3/150	0,35	0 -150	21	282	298	20	41	160	80	20	18
ACH0.6/150	0,65	0 -150	22	282	298	20	41	160	80	20	18
ACH1.3/150	1,3	0 -150	23	282	298	20	41	160	80	20	18
ACH2.3/150	2,3	0 -150	33	290	321	23	50	160	80	25	20
ACH3.3/150	3,3	0 -150	39	290	321	23	50	160	80	25	20
ACH5.0/150	5,0	0 -150	59	395	405	30	82	210	100	30	28
ACH6.6/150	6,65	0 -150	65	395	405	30	82	210	100	30	28
ACH0.3/250	0,35	0 -250	21	262	448	20	41	140	80	20	18
ACH0.6/250	0,65	0 -250	22	262	448	20	41	140	80	20	18
ACH1.3/250	1,3	0 -250	23	262	448	20	41	140	80	20	18
ACH2.3/250	2,3	0 -250	33	290	417	23	60	160	80	25	21
ACH3.3/250	3,3	0 -250	39	290	417	23	60	160	80	25	21
ACH5.0/250	5,0	0 -250	59	395	495	30	82	210	100	30	28
ACH6.6/250	6,65	0 -250	65	395	495	30	82	210	100	30	28

Diagram

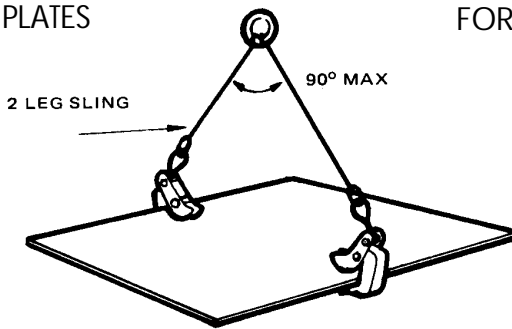


Always read instructions prior to use.

RESTRICTIONS

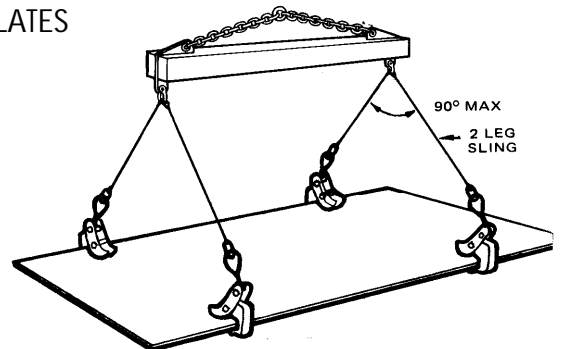
Included angle between chain and sling is not to exceed 90 degrees.

FOR SHORT PLATES



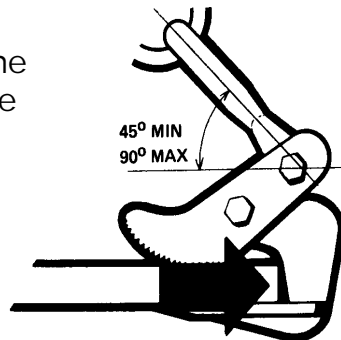
Use one pair of clamps for short plates

FOR LONG PLATES



Use a lifting beam or a spreader beam for long plates. DO NOT use endless chain slings or 4 leg slings.

Check the plate is in contact with the back of the clamp. Bundles must be the same width and size.



OPTIONS

Standard clamps have a jaw capacity of 0 to 150mm and 0 to 250mm, although other sizes are available on request, the clamp is also available with a flat plate jaw that can be lined with various materials eg hard rubber to prevent damage to load.